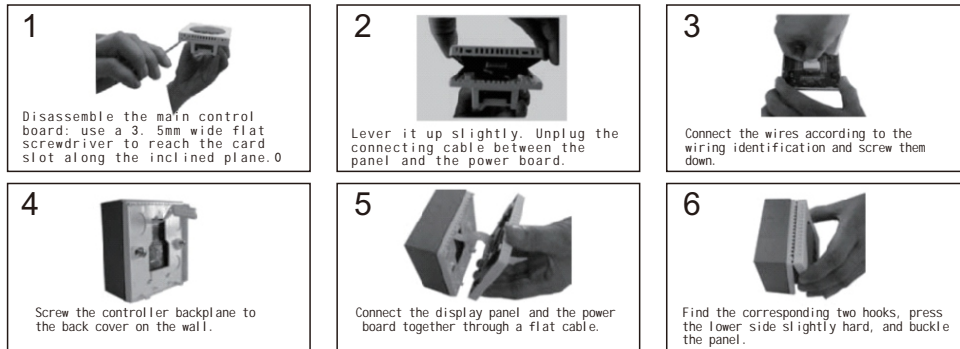
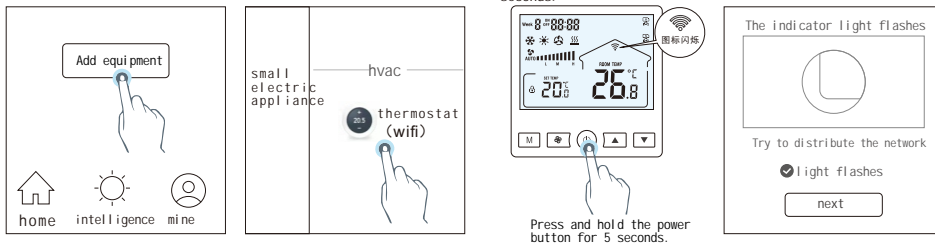


V. Installation Diagram

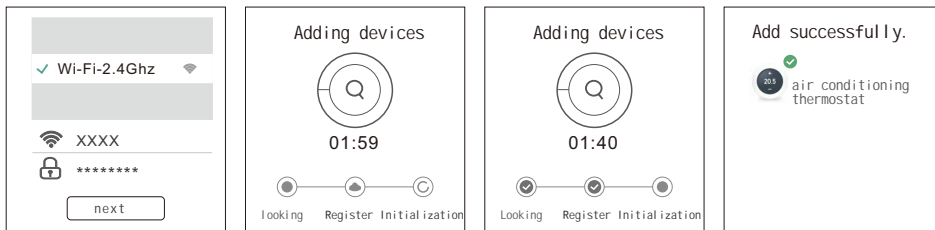


Vi. WIFI connection operation (model with WiFi function)

1. Search the "Graffiti Intelligence" APP in the application market, register and log in, and click "Add Device".
2. Select "WiFi" under the directory of "Small Appliances" in the device.
3. In the power-on state, the WiFi icon flashes after pressing the power-on key of the thermostat for 5 seconds.
5. After selecting the 2.4GHz Wi-Fi network and entering the password, click "Next".



5. After selecting the 2.4GHz Wi-Fi network and entering the password, click "Next".
6. Wait for the equipment to be added, and the process will take about 1 minute.
7. After waiting for more than ten seconds, the equipment addition will be completed soon.
8. After the device is successfully added, you can happily use the mobile APP control.



VII. Warranty and Precautions

The warranty period of this product is 24 months, counting from the date of product sales. The following operations are not covered by the warranty:

1. human failure or warranty period and unauthorized disassembly and maintenance;
2. Loss or damage caused by force majeure or external reasons;
3. Misuse, accident, negligence, unauthorized modification or repair;
4. Use beyond the limit;
5. Violation of operating regulations.
6. One manual of the packaging accessories, one certificate of approval and two installation screws.

705 Fan coil thermostat Operation Manual

I. Matters needing attention

The input and output voltages of this product are dangerous, and improper operation will endanger life safety. Please read this manual carefully before operation. Unauthorized professional maintenance personnel, please do not disassemble and assemble without permission. All the consequences caused by the user's illegal operation shall be borne by the user himself and have nothing to do with the company.

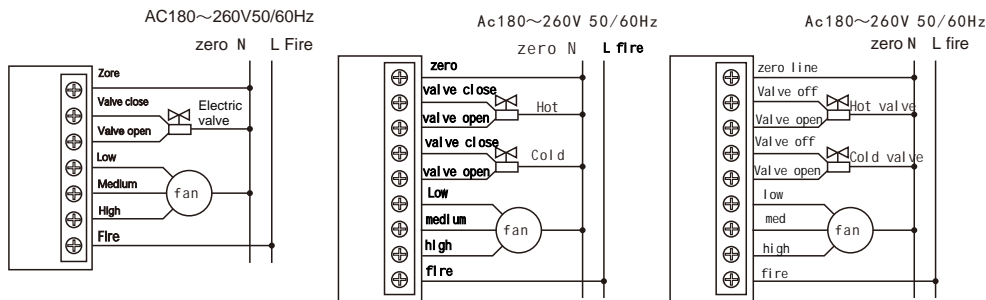
Installation environment and precautions:

- ◆ Please cut off the power supply during installation.
- ◆ The installation position should not be too low to avoid heat source;
- ◆ Connect the circuit according to the wiring diagram of the bottom case, please contact the dealer or manufacturer for details;
- ◆ Load according to the marked current, and overload is prohibited;
- ⚠ Warning: The wiring must be correctly connected according to the wiring diagram, otherwise the device will be damaged.

Second, the performance parameters

Temperature sensor: NTC	Power supply voltage: AC 180 ~ 260 V, 50/60 Hz
thermistor control accuracy: 1°C	Power consumption: < 1W
Temperature setting: 05 ~ 35°C	Load power: 3A < 200W, 10A < 1000W.
Display range: 0 ~ 50°C	Terminal: 2*1.5mm or 1*2.5mm conductor.
Working environment: 0 ~ 45°C	Shell: PC+ABS flame retardant
Display: LCD	Overall dimensions: 86*86*17mm (width * height * thickness)
Humidity: 5 ~ 95% RH (no condensation)	Installation hole spacing: 60mm (standard)

|||、 the wiring diagram



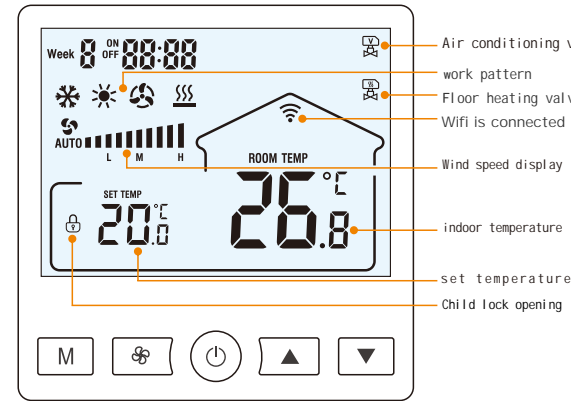
Two pipe controls

Four pipe controls

Air-ground integration

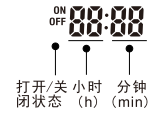
Note: If a two-wire valve is used, the "valve" will be connected immediately; No valve, no need.

Fourth, the function operation instructions

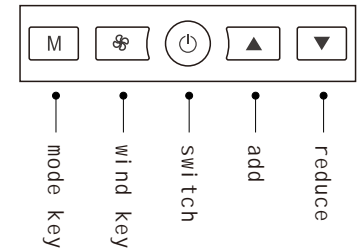


Note: No Wi function and no time display.

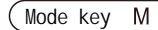
Timing status description:



Case description :



◆ Press the key "⏻" once to turn on the control panel, and then press it again to turn it off.

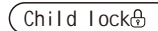


◆ in the boot state, press the "M" key to switch the working mode. "❄" represents the cooling mode, "☀" represents the heating mode, "🌀" represents the ventilation mode, and "🔥" represents the floor heating mode. "❄+☀" "Heating + underfloor heating mode (note: ventilation and floor heating modes are only available for specific models).

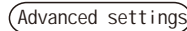
◆ Long press "M" key for 5 seconds to enter the time setting state, press M key for minute/hour switching, Up regulation "▲" and The downward "▼" key sets the time parameter (press M to switch the timer on/off setting state), and it will be confirmed automatically after 5 seconds.



◆ in the boot state, press the "🌀" button to switch the air speed ("🌀" Low, "🌀" Medium, High "🌀" "Auto mode. In automatic mode, when the difference between room temperature and set temperature is more than 3°C, it automatically switches to high speed, and when the difference is 2°C, it automatically switches to medium speed. 2°C automatically switches to medium speed, and the temperature difference of 1°C automatically switches to low speed).



under startup status, Press the "▲" and "▼" simultaneously for 5 seconds to enter the locking state. In the child lock state, press the "▲" and "▼" keys simultaneously for 5 seconds to unlock.



◆ Under the state of power off, press "M" and "🌀" key at the same time for 5 seconds to enter the advanced setting, M key to select the setting item, "▲" and "▼" keys to set the parameters, 01 item for temperature compensation correction, default -2, range -9°C ~ 9°C, other setting items non-technical personnel do not move!