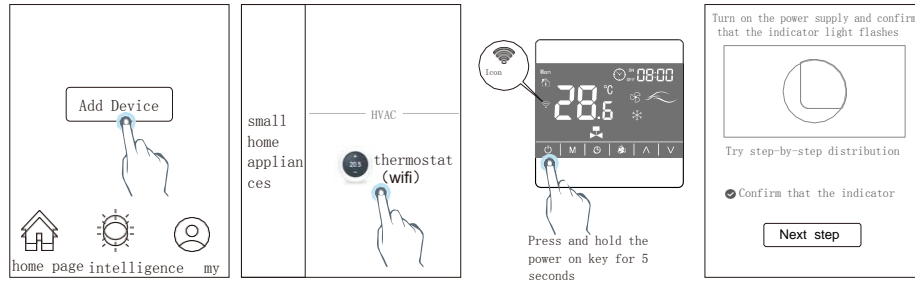
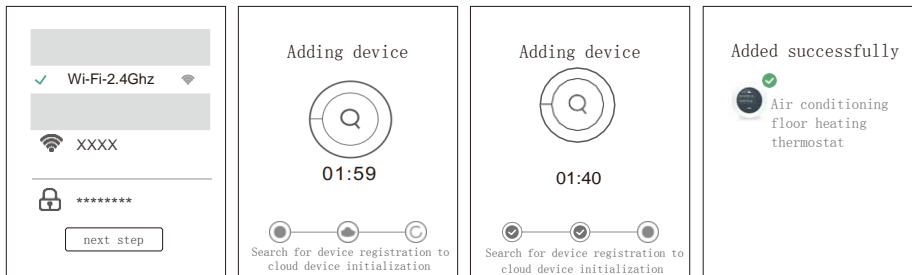


6、WIFI connection operation (models with Wi Fi function)

1. After installing the "graffiti smart" app, after registering and logging in the account, click "add device".
2. The selection of "temperature controller" under "small device" (WiFi)"
3. In the power on state, long press the power on key of the thermostat for 5 seconds, and the Wi Fi icon will flash.
4. After confirming that the Wi Fi icon of the thermostat flashes, tick "confirm indicator flash" and click "next".



5. Select 24 GHz Wi Fi network and input the password, then click "Next".
6. Wait for the device to be added. The process takes about 1 minute.
7. After waiting for more than ten seconds, the device addition will be completed.
8. The device is added successfully, and you can use your mobile APP to control the



Note: a temperature controller can only be bound to one mobile phone. If a mobile phone is replaced and connected to this temperature controller, the bound mobile phone must be unbound before it can be connected. The tied mobile phone can be shared with other mobile phones to operate the temperature controller. The specific operation can be set according to the instructions in the graffiti smart app.

Touch the fan coil thermostat 8905 / 8907 Product specification

1. precautions

▲ note

The input voltage and output voltage of Benning product are dangerous high voltage. Improper operation will endanger life safe

Please read this manual carefully before installation and operation, and pay attention to various warning signs and statements on the equipment. Wrong Authorized professional maintenance personnel, please do not disassemble without permission. All consequences caused by the user's illegal operation shall be borne by the user. It shall be borne by itself and has nothing to do with the company.

Installation environment and precaution

- ◆ Cut off the power supply during installation. Configure power switch to cut off the power supply when
- ◆ Connect the circuit according to the bottom shell wiring diagram. If the controller used does not match the installation drawing, please contact the dealer or manufacturer;
- ◆ Load shall be provided according to the marked current and overload is prohibited;
- ⚠ Warning: the wiring must be correctly connected according to the wiring diagram. Do not put water, mud and other impurities into the controller, otherwise the device will be damaged.

Safety precautions

- ◆ please read carefully before using this product

And ask Anshan to keep the instructions;

- ◆ before power on, please confirm that the wiring is correct. Read "precautions" to ensure correct and safe u

- ◆ when the product needs to be moved or rewired, disconnect the AC power input and ensure that the product Stop the machine completely, otherwise the output end may still be charged and there is a risk of electric shock;

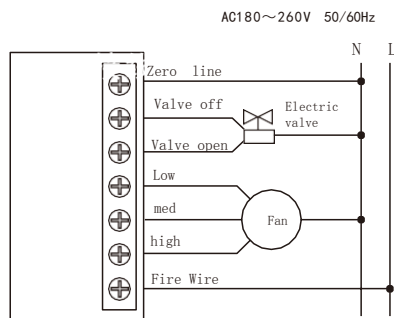
- ◆ when cleaning, please use a dry object to wipe.

2. Performance

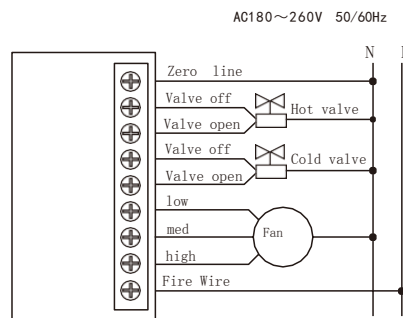
Temperature sensor: NTC thermistor
 control accuracy: $\pm 1\text{ }^{\circ}\text{C}$
 Temperature setting: $05 \sim 35\text{ }^{\circ}\text{C}$
 display range: $0 \sim 50\text{ }^{\circ}\text{C}$
 working environment: $0 \sim 45\text{ }^{\circ}\text{C}$
 display: LCD
 Humidity: $5 \sim 95\%$ RH (no condensation)

Power supply voltage: AC $180 \sim 260\text{ V}$, $50 / 60\text{ Hz}$
 power consumption: $< 1\text{ W}$
 Load power: $< 300\text{ W}$
 Terminal block: able to connect $2 * 15\text{ mm}$ or $1 * 25\text{ mm}$ conductor
 shell: PC + ABS flame retardant
 Overall dimension: $86 * 86 * 17\text{ mm}$ (width * height * thickness)
 installation hole distance: 60 mm (standard)

3. wiring diagram



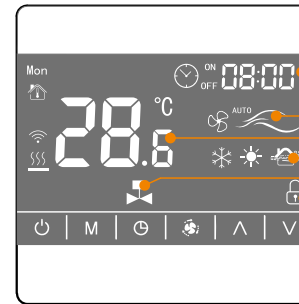
Second control



Four control

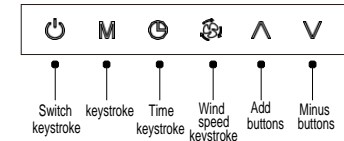
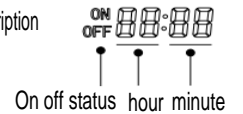
Note: if a normally closed two-wire valve is used on site, it only needs to be connected to "valve on". If there is no valve, "valve on" and "valve off" do not need to be connected

4. operating instructions



- Time display (Wifi model synchronizes network time)
- Wind speed display
- Temperature display
- Cooling/heating/ventilation mode water valve open
- Key lock

Display status description



Switch button

- ◆ Press "⏻" Press the key once to turn on the control panel, and then press the key again to turn off the output.

Mode key M

- ◆ In the startup state, press the "▲" up and "▼" down keys to adjust the temperature. When the room temperature reaches the
- ◆ In the startup state, press the "M" key to switch the working mode. ❄ represents the cooling mode, ☀ represents the heating mode, "🌀" represents the ventilation mode, and "🏠" represents the floor heating mode (note: ventilation and floor heating modes are only available for specific models).
- ◆ Long press "⌚" Press the M key for 5 seconds to enter the time setting state, and then press the "⌚" key to switch to the timing on / off setting state. Press the "⌚" key to switch between minutes / hour and press the key "▲" "Up regulation and "▼" Adjust the key to set the parameters, and confirm automatically after 5 seconds.

Wind speed key

- ◆ Press the "🌀" key to switch the wind speed when the machine is turned on ("🌀" Low speed "🌀" Medium speed "🌀" High speed, "🌀" automatic. At the automatic wind speed, if the difference between the room temperature and the set temperature is greater than 3°C, it is high speed, 2°C is medium speed, and 1°C is low speed.)

Child lock

- ◆ under startup status Press "▲" and "▼" simultaneously for 5 seconds to enter the locking state Press "▲" and "▼" simultaneously for 5 seconds to unlock.

Advanced

- ◆ Press the "M" And "🌀" key for 5 seconds to enter the advanced setting, M key to select the setting item, up and down key to set the parameters, 08 item is temperature compensation correction, the range is $-9\text{ }^{\circ}\text{C} \sim 9\text{ }^{\circ}\text{C}$, and other items are set for non-technical personnel not to move!!

5. Installation diagram

- Disassemble the main control board: use 3A 5 mm wide
- Pry up slightly to open the hook. Unplug the connection cable
- Connect the wire to the corresponding terminal block
- Screw the controller backplane to the back cover
- Connect the display panel and the power board together
- Hang the two hooks above at an angle of 30 degrees, press the