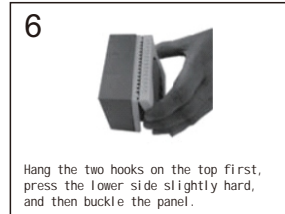
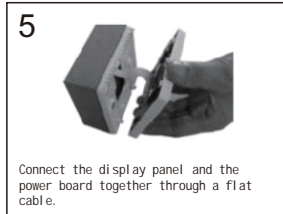
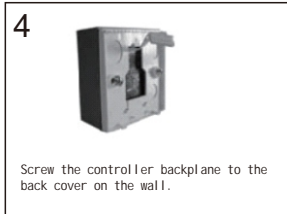
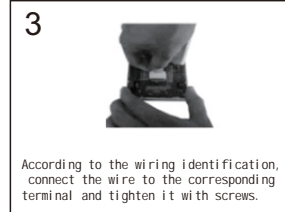
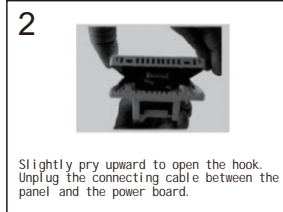
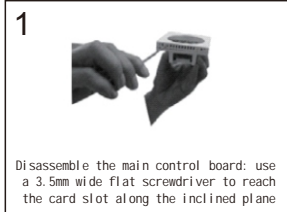


五、Installation diagram



Fresh air/air conditioning speed controller

Product specification

六 Warranty and precautions

The warranty period of this product is 24 months, counting from the date of product sales. The following operations are not covered by the warranty:

- 1, human failure or warranty period and unauthorized disassembly and maintenance;
2. Loss or damage caused by force majeure or external reasons;
3. Misuse, accident, negligence, unauthorized modification or repair;
4. Use beyond the limit;
5. Violation of operating regulations.
6. One manual of the packaging accessories, one certificate of approval and two installation screws.

一、matters need attention

▲ Pay attention to things

The input and output of this product are dangerously high voltage, and improper operation will endanger life safety. Please read this manual carefully before installation and operation, and pay attention to various warning signs and warning statements on the equipment. Please don't disassemble it without permission. All the consequences caused by the user's illegal operation shall be borne by the user himself and have nothing to do with the company.

1. installation environment and matters needing attention

Connect in strict accordance with the circuit diagram;

One controller can only drive one fan.

Please consult the dealer if you need special customization function.

2. Safety precautions

Please read the "Precautions" carefully before using this product to ensure correct and safe use.

Before powering on, please make sure that the wiring is correct.

When the product needs to be moved or reconnected, the AC power supply should be disconnected, and the product should be completely stopped, otherwise the output terminal may still be charged and there will be the risk of electric shock.

二、performance parameter

Standby power consumption : < 2W

Control output rated power consumption : < 1000W

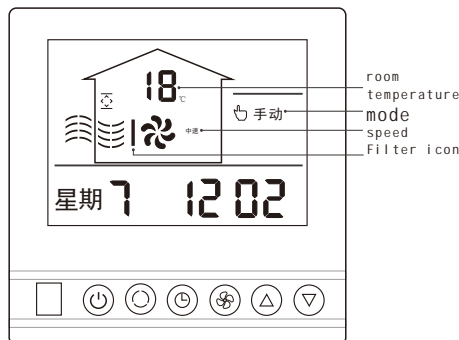
work voltage : 220V

Working frequency: 50/60Hz

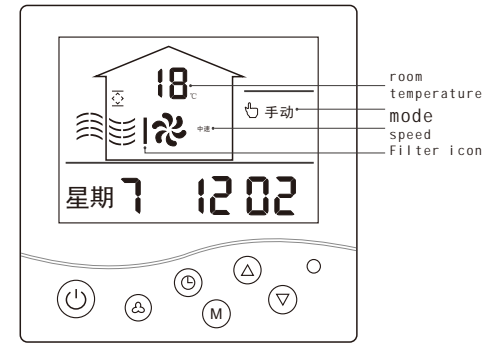
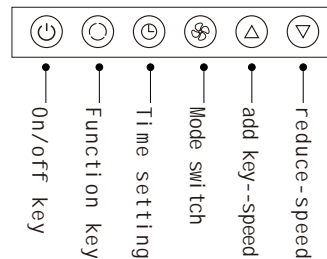
outline dimension : 86x86x30mm

Installation hole spacing : 60mm

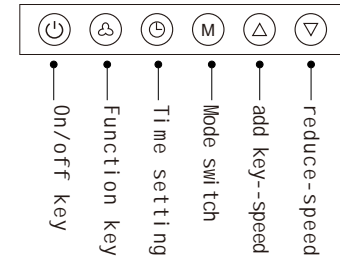
三、Functional operation instructions



Key description :



Key description :



on/off key (⏻)

Press the "⏻" key to turn on the fresh air system; press it again, turn off system

Function key (⏸)

1. Press the function key "⏸" briefly to control the opening or closing of the air valve (only for models with air valves controlled separately).
2. Press and hold the function key "⏸" for 5 seconds to display the working time of the filter, and press and hold for 10 seconds to reset. After working for more than 1000 hours, the filter icon flashes, and after working for more than 3000 hours, the filter icon is always on.

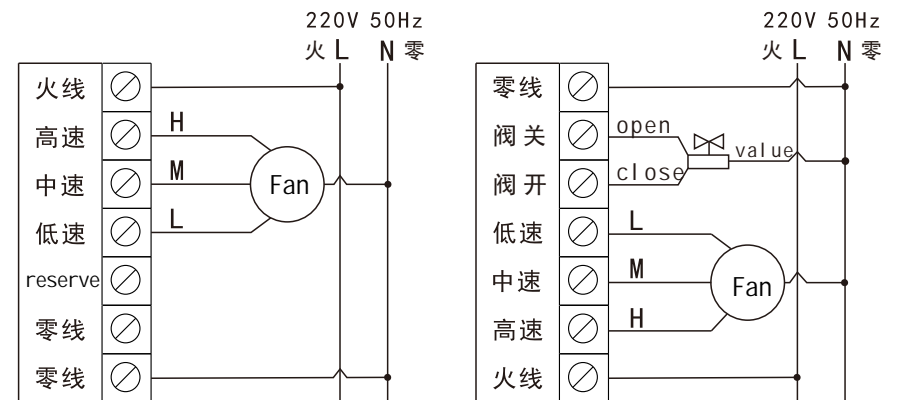
add/reduce key (⏮ ⏭)

When the fresh air system is turned on, press "⏮" or "⏭" to adjust the air volume.

mode switch (⏺)

Press the "⏺" key short to switch the manual mode\ timing mode. In the manual mode, the user can adjust the wind speed by pressing the "⏮" and "⏭" keys. In the timing mode, the user sets the startup time, shutdown time and wind speed, and the controller will automatically run according to the set parameters.

四、wiring



Windless valve type

Air valve type